

UPLIFTING COMPANY

AUTOP **STENHOJ**

Mascot 40H, 40HB, 55H

Electro-hydraulic 2-post lift
with 4.0 & 5.5 t capacity

Surface-mounted lifts

**VERTICAL
POWER**

The highlights of the Mascot series:

- Low minimum height
- Stable, bent posts
- Powerful hydraulic cylinders
- Universal lifting area
- Premium features in the standard version

Multifunctional workstation with very good lifting area!

When it comes to a high level, you should be sure to pay attention to the details.

Mascot series:

The 2-post lifts from the Mascot series are convincing as multifunctional workstations with a very good lifting area and a low minimum height, in accordance with OEM specifications.

The Mascot lifts are equipped as standard with a valve that can reduce the lowering speed. This is particularly useful when removing high-voltage batteries and a slow and controlled lowering of the vehicle is needed.

If required, the standard setting of a short lift up out of safety lock before lowering can be changed to immediate lowering by a switch on the control unit.

For optimum workplace efficiency, the Mascot series has a second control unit on the counter-column, incl. compressed air and power supply.

The Mascot lifts all have a reliable hydraulic system and guarantee long service life with low running costs.



Mascot 40H, 40HB, 55H

Technical data

	Mascot 40 H	Mascot 40 HB	Mascot 55 H
Lifting capacity	4000 kg	4000 kg	5500 kg
Lifting height	1900 mm	1900 mm	1900 mm
Working height	1999 - 2066 mm	1995 - 2071 mm	2000 - 2047 mm
Lifting / lowering time	~ 30 sec.	~ 30 sec.	~ 50 sec.
Motor	3 kW	3 kW	3 kW
Voltage	3x230 / 400 V-50 / 60Hz - 16 A	3x230 / 400 V-50 / 60Hz - 16 A	3x230 / 400 V-50 / 60Hz - 16 A

Arm superstructure

Adjustment range of lifing pads	F: 90 - 166 mm	F: 95 - 171 mm	F: 100 - 147 mm
Min. height	90 mm	95 mm	100 mm
Drive-through width	2405 mm	2512 mm	2784 mm
Width between posts	2740 mm	2780 mm	3317 mm
Total width outer edge base plates	3500 mm	3500 mm	3832 mm
Total height post	3995 + 225 mm	2841 3430 mm	4015 mm
Arm length front, min. - max.	F DT: 600 - 1245 mm	F DT: 600 - 1250 mm	F DT: 915 - 1850 mm
Arm length rear, min. - max.	F DT: 750 - 1445 mm	F DT: 600 - 1250 mm	F DT: 915 - 1850 mm

Mascot 40H, 40HB, 55H

Electro-hydraulic 2-post lift with 4.0 & 5.5 t capacity

Standard colour:

- Arms: RAL 3020
- Posts: RAL 7016

Optional extras:

- Available with different portal heights
- LED lighting
- Set of expansion bolts
- Base plate extension for poor ground conditions
- Large program of extra pads, depending on type of vehicle

Standard:

- Control unit on both columns
- Control units with integrated compressed air and electrical connection
- Switch for slow lowering
- Switch for direct lowering, without lifting from the latch

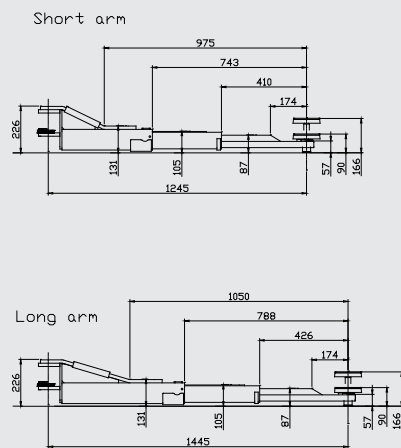
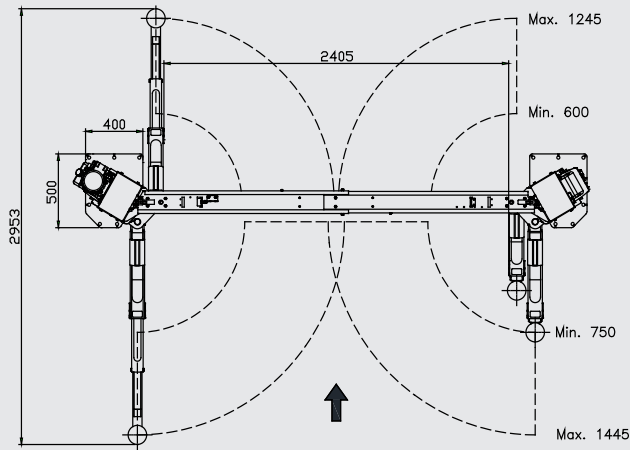
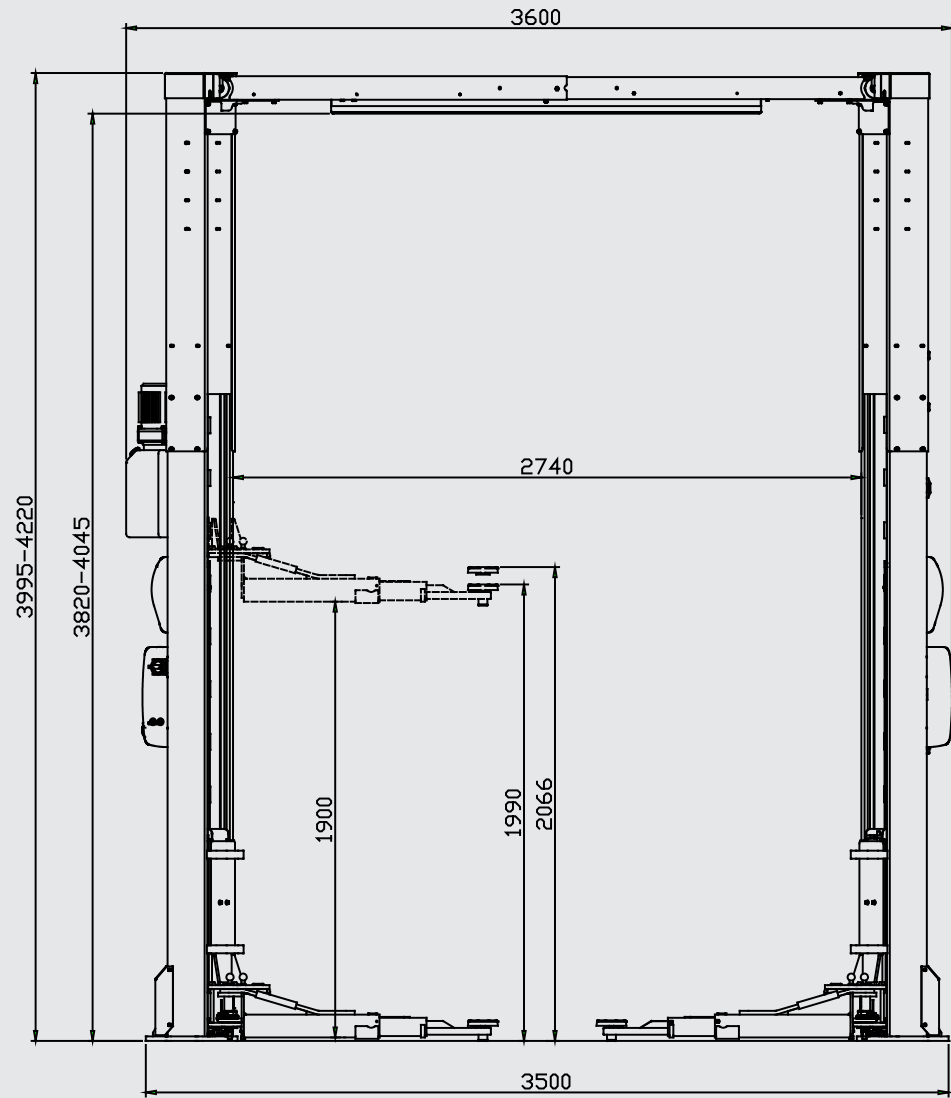


Mascot 55 H

Mascot 40 HB

Mascot 40 H

Electro-hydraulic 2-post lift with 4 t capacity

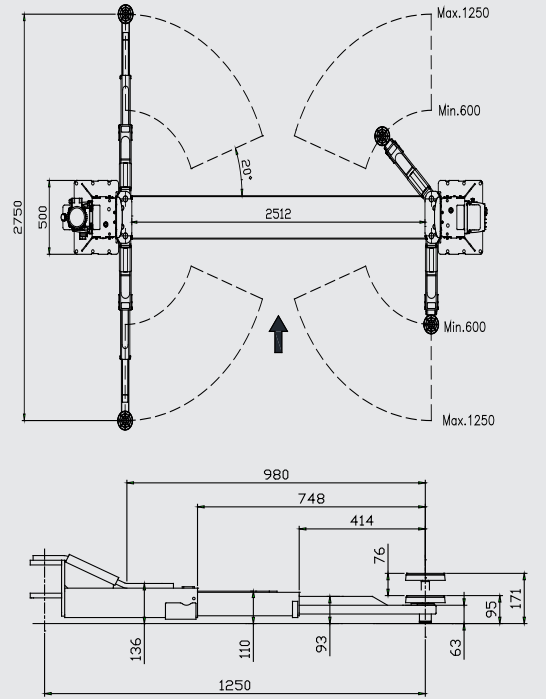
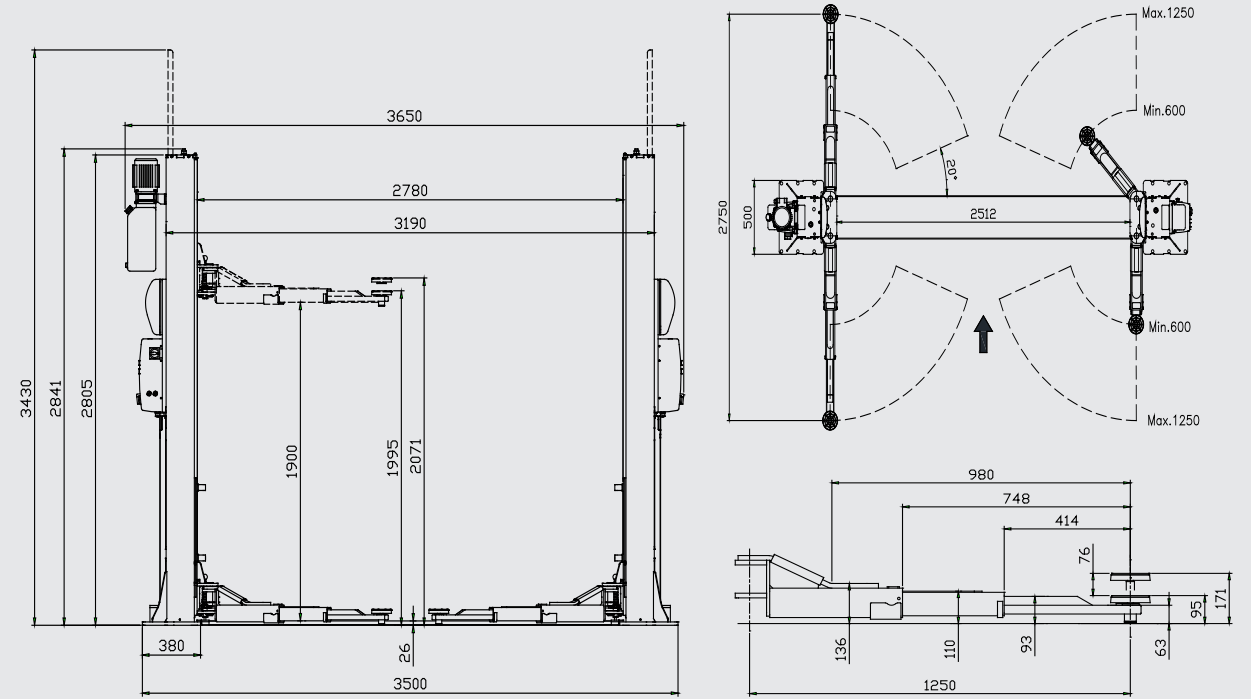


Illustrations are not binding and optional. Under reserve of dimensional, constructional and technical modifications! Validity 07/2024



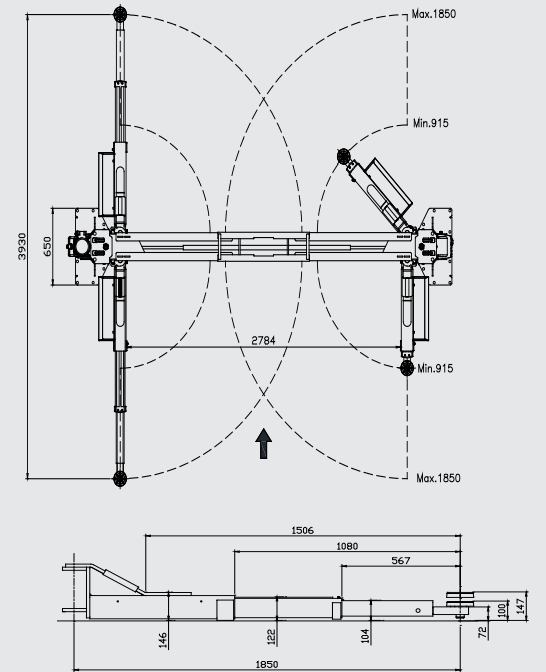
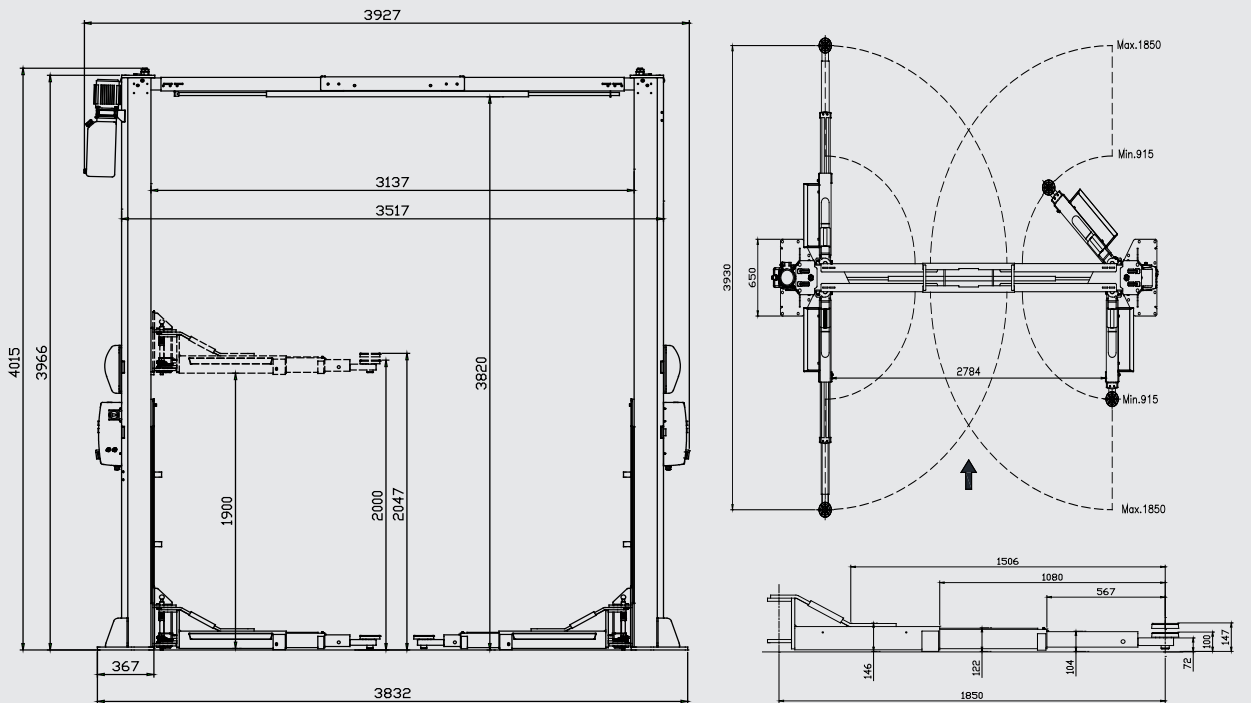
Mascot 40 HB

Electro-hydraulic 2-post lift with 4 t capacity



Mascot 55 H

Electro-hydraulic 2-post lift with 5.5 t capacity



Illustrations are not binding and optional. Under reserve of dimensional, constructional and technical modifications! Validity 07/2024

Mascot 40H, 40HB, 55H

