

# Major 5030-53 Combi

Electro-hydraulic 4-post lift, 5 t capacity, integrated free-wheel lift



## Application

- Check-in
- Repair and maintenance
- Wheel alignment
- Testing

## Description:

### Post:

- Integrated eccentric brake system
- Emergency stop valve
- Obstruction system
- Pneumatic parking system in height adjustable ratchets
- Pump unit with immersed motor and control unit on rear left post
- Pushbutton control unit with alarm signal
- Hydraulic cylinder under left platform
- Lifting and lowering by means of cables
- Emergency lowering valve

### Platforms:

- Platform fixed
- Free-wheel lift integrated in platform

### Standard colours:

- Platforms & posts: RAL 7016 – grey
- Ramps: RAL 3020 – red

## Versions:

- Available with different voltages
- Drive-on ramps and stops for surface-mounting, alternatively drive-over ramps for recessed installation
- S = flush platforms
- W = with front recesses for turn tables and rear side slip plates
- 53 = 5,300 mm platforms

## Optional extras:

- Set of expansion bolts
- LED-lighting set

**Special colours available on request!**



Scan the QR-Code for detailed product information.

Further Information on [www.autopstenhoj.com](http://www.autopstenhoj.com)

**AUTOPSTENHOJ GmbH**

Sandkampstraße 90  
D-48432 Rheine  
☎ +49 5971 8602-02  
✉ info@autopstenhoj.com

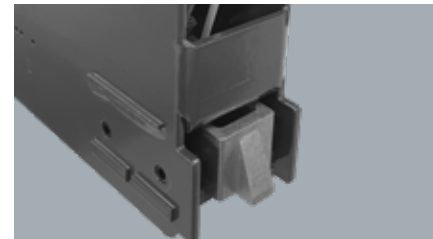
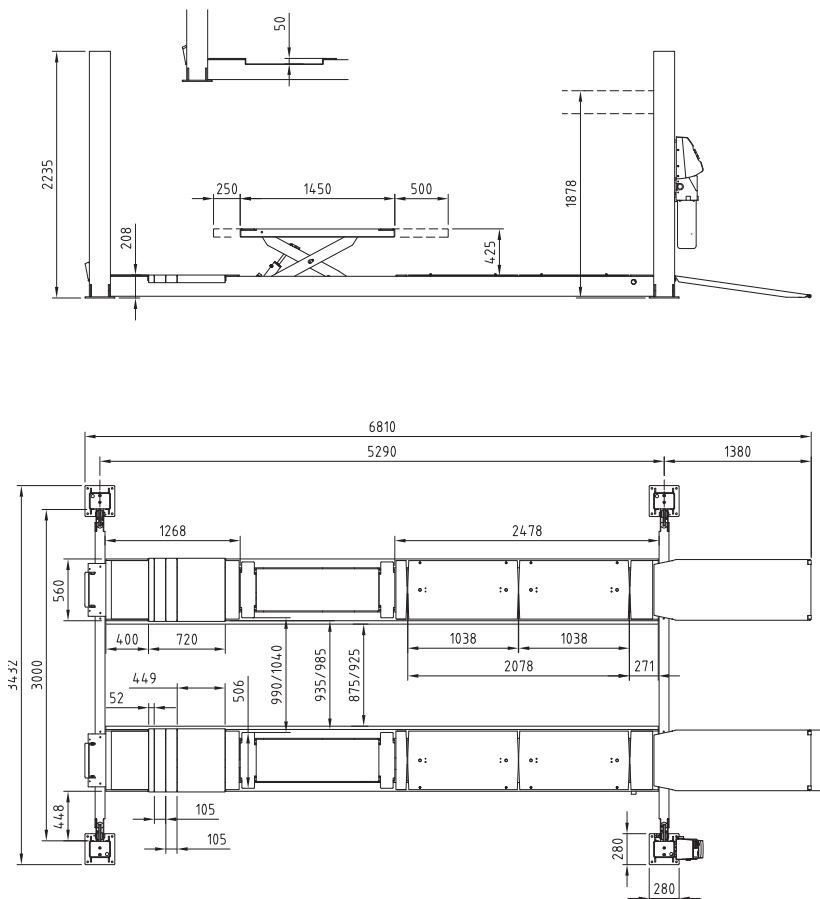
**AUTOPSTENHOJ GmbH**

Barrit Langgade 188-190  
DK-7150 Barrit  
☎ +45 76 82 13 30  
✉ info@autopstenhoj.com

Technical data	
Lifting capacity	5,000 kg
Lifting height	1,670 mm
Working height	1,878 mm
Lifting / lowering time	approx. 33 / 24 sec.
Pump unit	3 kW
Voltage	3x230 / 400V – 50 Hz – 25 / 16 A

Free-wheel lift	
Lifting capacity	3,500 kg
Height	425 mm
Min. height (mm)	0
Length min. - max.	1,450 - 2,200 mm
Lifting / lowering time	hydraulic
Operation	9/12 sec.

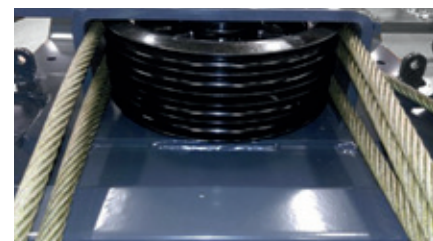
Platforms	
Total length	6,810 mm
Usable length of platform	5,290 mm
Wheel base, min. - max.	variable
Platform width	560 mm
Distance between platforms	935 – 985 mm
Min. height	200 / 208 mm
Width between posts	3,000 mm
Total width - outer edges base plates	3,432 mm
Total height	2,233 mm



Ratchet for parking position



Control unit and power pack on rear left post



Pulley with steel cable