



Masterlift 2.30 NxT Sa Supersport

Electro-hydraulic twin-ram lift, 3.0 t
with swivel arms

NxT Generation

NxT Generation - Inground lifts



What's underneath should excite you just as much as what's on it.

Masterlift 2.30 NxT Sa Supersport:

The single telescopic **sport arms** impress with an **extremely low minimum height**, which is particularly an advantage for the safe lifting of flat sports cars.

The **internal arm locking system** installed as standard reliably protects against external influences.

The **strong 140 mm diameter cylinders** are also designed for long-lasting functionality and further round off the high quality level, which ensures **low maintenance requirements**.

Even in the event of a power blackout, the lift can still be lowered without any problems thanks to the pneumatic emergency lowering system.

The Masterlift 2.30 NxT Sa Supersport is perfectly completed by a **control system that is both visually and technically convincing**.

also suitable for the safe lifting of electric vehicles.



The highlights of the Masterlift 2.30 NxT Sa Supersport:

- Swivel arms: extremely flat
- Ø140 mm cylinder: strong, low-maintenance, durable
- Arm locking system: protected and finely adjustable
- Control: modern, reliable, intuitive operation

When things get really sporty!

Masterlift 2.30 NxT Sa Supersport

Technical data

| | |
|-------------------------|--------------------------|
| Lifting capacity | 3000 kg |
| Stroke length | 1915 mm |
| Working height | 1985-2010 mm |
| Cylinder diameter | 2 x 140 mm |
| Cylinder distance | 2600 mm |
| Lifting / lowering time | ~ 30 sec. |
| Foundation depth | 2640 mm |
| Pump unit | 3.0 kW |
| Hydraulic fluid | 10 l |
| Voltage | 230/400 V / 50 Hz / 16 A |

Standard colour:

- Base plate: RAL 7016
- Arms: RAL 3020 - optionally with KTL coating

Optional extras:

- Wide range of extra pads, depending on vehicle type
- Special colours on request

Variants:

- Synchronisation and safety via
 - synchronisation bar
 - toothed rack
- Self-supporting installation, without load on the bottom of the sub-casing

Arm superstructure

| | |
|--------------------------------------|--|
| Total width | 3015 mm |
| Lifting pad included in the delivery | 29265 l 70-95 mm |
| Drive-through width | 2455 mm |
| Min. height | 70 - 95 mm + 65 mm height extension |
| Arm length, min. - max. | 760 - 1252 mm |
| Arm insertion height | 55 mm |

Installation variants:

- On-floor installation
- Ceiling installation

Frame:

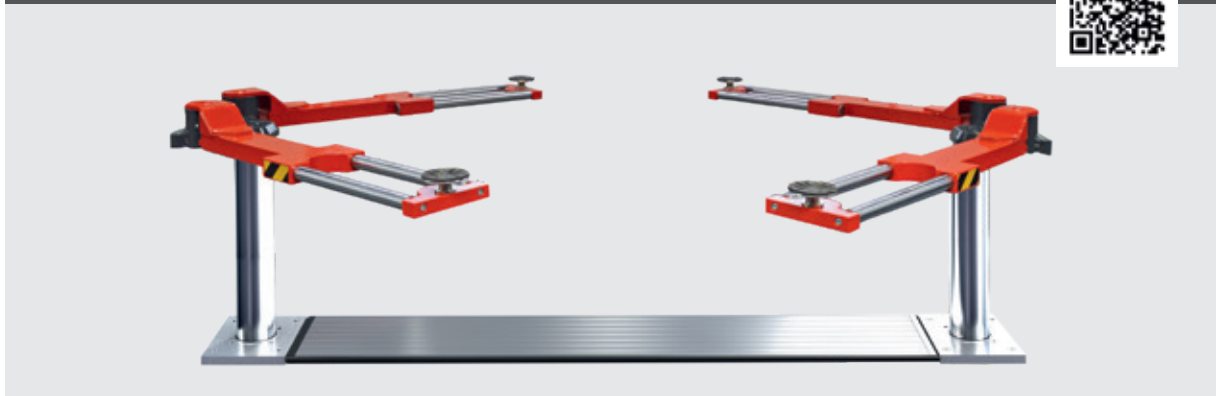
- Standard: completely hot-dip galvanized

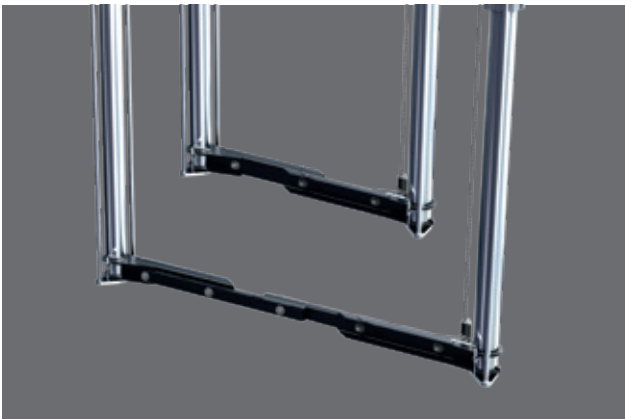
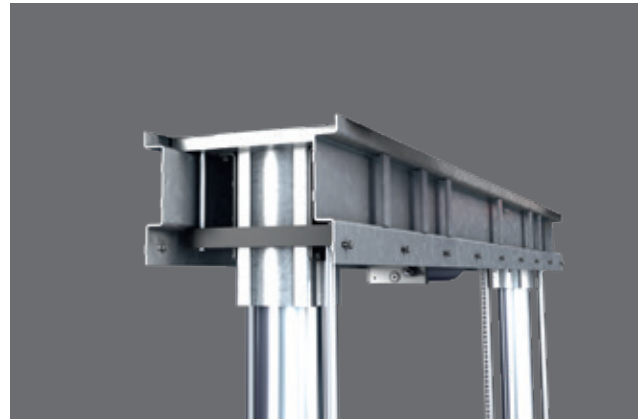
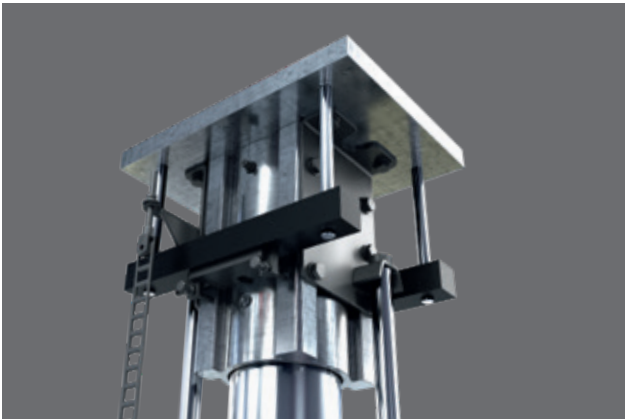
Sub-casing:

- Standard: painted
- Optional: hot-dip galvanized or plastic-coated



www.autopstenhoj.com





And even more highlights: Inground technology reinvented!

With the **NxT Generation** inground lifts from AUTOPSTENHOJ you experience quality at the very highest level! We have made the best even better for you!

NxT Generation inground lifts: Flexible in installation and operation, also adaptable to possible, changing requirements in the future, due to our smart clamping system.

Synchronisation takes place either via a synchronisation bar or alternatively via a toothed rack. We achieve maximum stability through strong 140 mm cylinders and through our new aluminium guidance made of anodised solid material. With the new cassette cover, even strong forces acting on the cover during battery removal, for example, are safely absorbed.

The complete, sophisticated system gets by with only 10 litres of hydraulic fluid, thanks to proven high-pressure technology. Those who have the environment in mind should not disregard this fact.

The **NxT Generation inground lift** is suitable for all installation variants and thus, of course, also for self-supporting installation. The **NxT Generation inground lifts** are also always a good choice for replacement campaigns or retrofitting in third-party cassettes.

NxT Generation: Patented, flexible, modular

