



Masterlift 2.35 NxT Fn Check-in

Electro-hydraulic twin-ram lift, 3.5 t
with platforms and wheel-free device

NxT Generation

NxT Generation - Inground lifts



What's underneath should excite you just as much as what's on it.

Masterlift 2.35 NxT Check-in Fn:

The Masterlift 2.35 NxT Fn Check-in platform lifts with wheel-free device each consist of two on-floor, **particularly flat platforms for direct reception.**

The aluminium planking ensures a **permanently attractive appearance.**

Thanks to the 1550 mm piston distance, the cylinders are centred under the platforms and thus ensure optimum force transmission.

The **strong 140 mm diameter cylinders** are also designed for long-lasting functionality and further round off the high quality level, which ensures **low maintenance requirements.**

Even in the event of a power blackout, the lift can still be lowered without any problems thanks to the pneumatic emergency lowering system. The Masterlift 2.35 NxT Fn Check-in is perfectly completed by a **control system that is both visually and technically convincing.**

The image shows a modern garage interior. In the foreground, the rear of a black Mercedes-Benz SL350 is visible, parked on a scissor lift. The lift has a red 'AUTOPSTENHOJ' logo on the rear bumper area. In the background, a blue car is elevated on another scissor lift. The floor is made of grey tiles. The overall scene is well-lit and professional.

The highlights of the Masterlift 2.35 Check-in Fn:

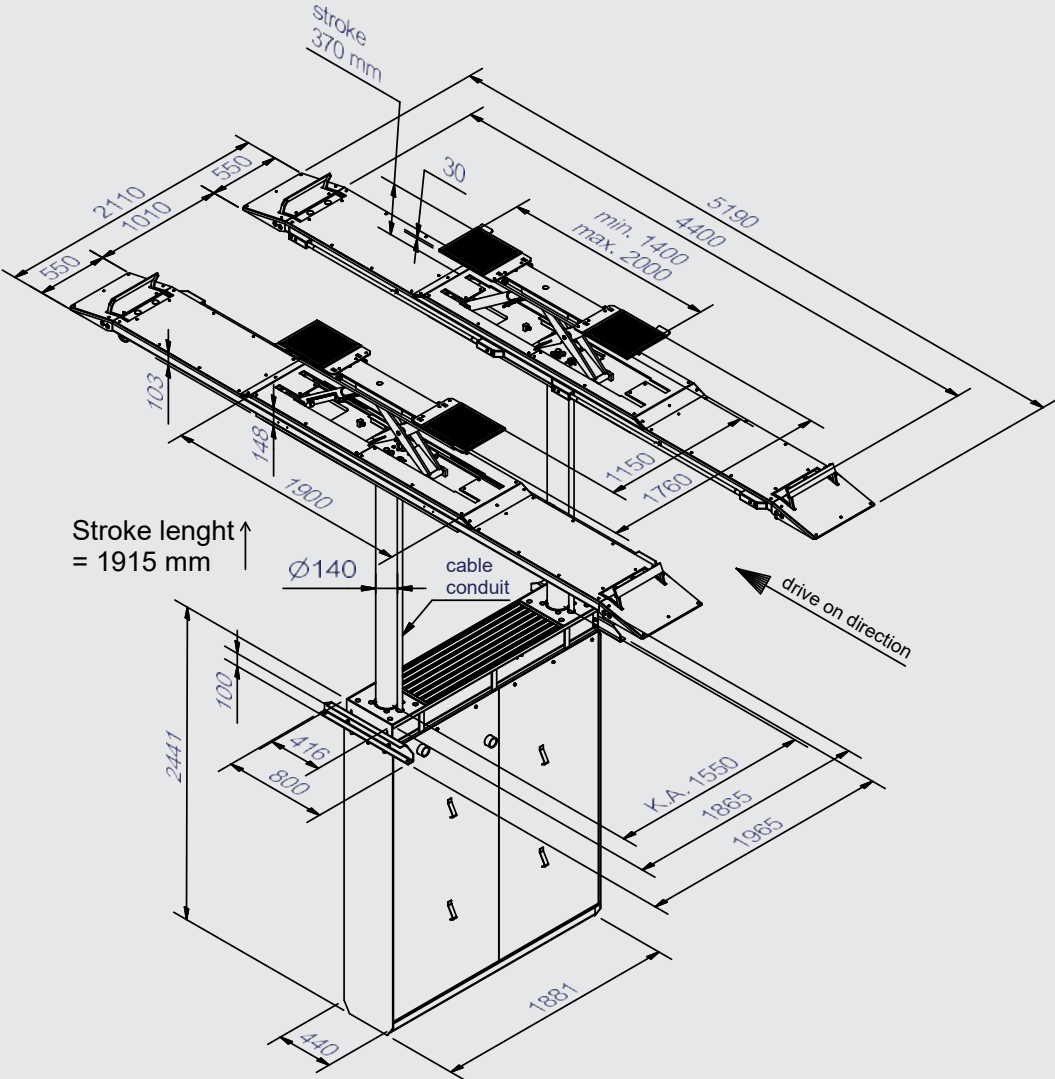
- Extremely flat platforms
- Aluminium planking for a permanently attractive appearance
- Scissor wheel-free device
- Lighting included
- Control: modern, reliable, intuitive operation

An eye-catcher in your direct reception area!

Masterlift 2.35 NxT Fn Check-in



Electro-hydraulic twin-ram lift, 3.5 t with platforms and wheel-free device



Illustrations are not binding and optional. Under reserve of dimensional, constructional and technical modifications! Validity 12/2023

Masterlift 2.35 NxT Fn Check-in

Technical data

Lifting capacity	3500 kg
Stroke length	1915 mm
Working height	2018 mm
Cylinder diameter	2 x 140 mm
Cylinder distance	1550 mm
Lifting / lowering time	~ 30 sec.
Foundation depth	2640 mm
Pump unit	3.0 kW
Hydraulic fluid	10 l
Voltage	230/400 V / 50 Hz / 16 A

Standard colour:

- Platforms: RAL 7016 with aluminium planking
- Wheel-free device: RAL 7016

Optional extras:

- XY-heads for wheel-free device (Fn)
- Hot-dip galvanisation

Installation variants:

- On-floor installation
- Ceiling installation
- Self-supporting installation, without load on the bottom of the sub-casing

Platforms

Total length	5190 mm
Usable length of platform	4400 mm
Wheel base, max.	2400 - 3300 mm
Platform width	550 mm
Distance between platforms	1010 mm
Drive-on height	103/148 mm

Wheel-free device

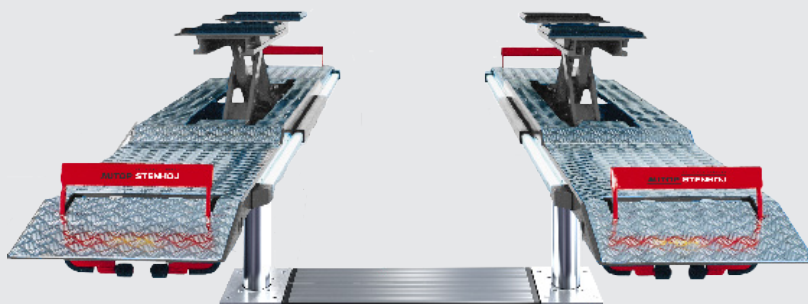
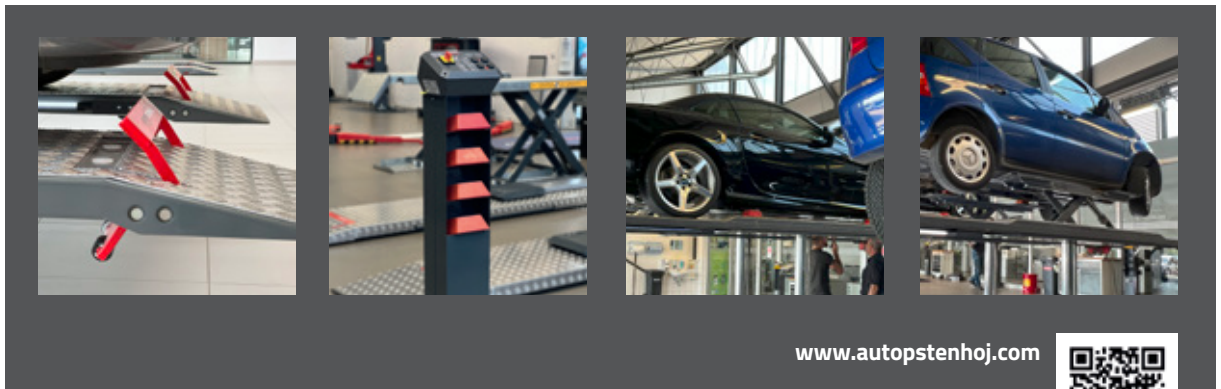
Total length	1400 - 2000 mm
Total height	370 mm
Lifting / lowering time	ca. 8 Sek.
Drive-over height	30 mm
Effective height above platform	445 mm

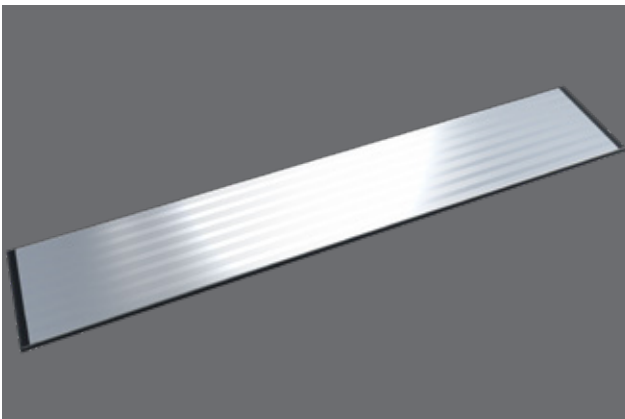
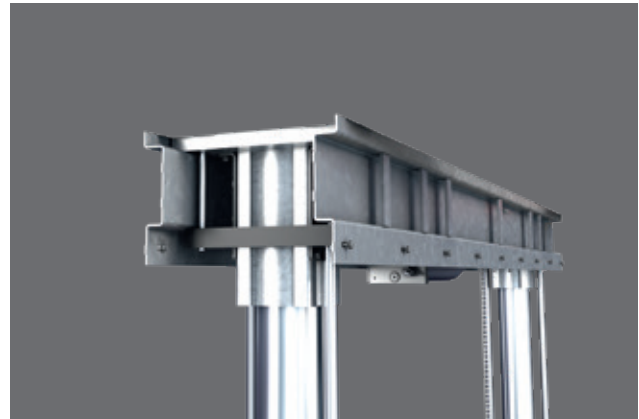
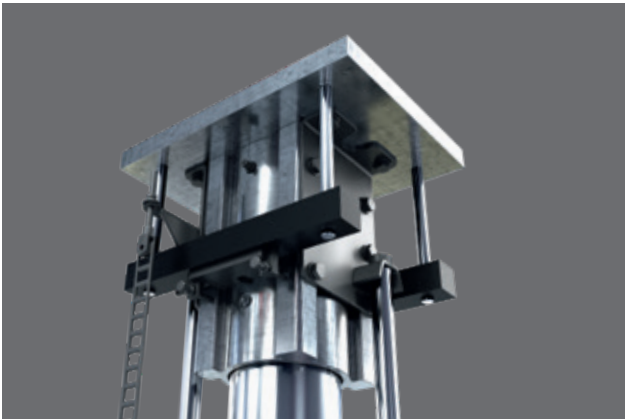
Frame:

- Standard: completely hot-dip galvanized

Sub-casing:

- Standard: painted
- Optional: hot-dip galvanized or plastic-coated





And even more highlights: Inground technology reinvented!

With the **NxT Generation** inground lifts from AUTOPSTENHOJ you experience quality at the very highest level! We have made the best even better for you!

NxT Generation inground lifts: Flexible in installation and operation, also adaptable to possible, changing requirements in the future, due to our smart clamping system.

Synchronisation takes place via a synchronisation bar. We achieve maximum stability through strong 140 mm cylinders and through our new aluminium guidance made of anodised solid material. With the new cassette cover, even strong forces acting on the cover during battery removal, for example, are safely absorbed.

The complete, sophisticated system gets by with only 10 litres of hydraulic fluid, thanks to proven high-pressure technology. Those who have the environment in mind should not disregard this fact.

The **NxT Generation inground lift** is suitable for all installation variants and thus, of course, also for self-supporting installation. The **NxT Generation inground lifts** are also always a good choice for replacement campaigns or retrofitting in third-party cassettes.

NxT Generation: Patented, flexible, modular

